

玉山國家公園東部園區  
八通關越嶺道東段

# 瓦拉米步道

## Walami Hiking Trail

瓦拉米在布農語意指一起跟著誰去作某件事，  
日治時期設置駐在所因藏類眾多而名藏(瓦拉米)駐在所。

玉山國家公園南安遊客中心 Nanan Visitor Center, Yushan National Park  
TEL : (03) 888-7560, 888-0742 FAX : (03) 888-0743  
花蓮縣卓溪鄉982卓清村9鄰83~3號(台30線6公里處)  
GPS(WGS84座標) X : 121.258856 Y : 23.302934  
ADD. : No. 83-3, Neighborhood 9, Jhuoching Village, Jhuosi Township, Hualien County  
玉山國家公園管理處 Yushan National Park Headquarters  
TEL : (049) 277-3121~6  
地址：南投縣水里鄉55344中山路一段515號  
ADD. : No. 515, Section 1, Jungshan Road, Shueili Shiang, Nantou County 55344  
全球資訊網網址：http://www.ysnp.gov.tw

### 交通資訊

- 目前花蓮縣玉里鎮至南安地區無大眾運輸工具通往。
- 自行開車從省道台9線至花蓮縣玉里鎮轉省道台30線約8公里即可抵達。  
南下請於省道台9線約292.7公里處經花蓮縣玉里鎮轉省道台30線，行至省道台30線6公里處。  
北上請於省道台9線約294公里處(玉里大橋)轉省道台30線，行至省道台30線6公里處。
- There is no public transportation directly leading to Nan-an Area.
- Drive along Provincial Highway No. 9 to Yuli Township, and then connect to Provincial Highway No. 30.  
You will arrive Nanan Visitor Center after driving about 8km.

### 台30線南安遊客中心周邊行車示意圖 Map of Surroundings



### 瓦拉米之行 建議行程及裝備 Suggested Itinerary and Equipment for Walami Trip

建議行程 Suggested Itinerary	建議路線 Suggested Route	里程(單程) Mileage (One way)	攜帶物品 Things to be brought along																
			入山證明 Mountain Entry Permit	入園證明 Park Entry Permit	飲水 Drinking Water	小背包 Small Backpack	運動鞋 Sports Shoes	雨衣 Raincoat	身份證 Identification Card	帽子 Hat	急救藥品 First Aid Medicine	食物 Food	手電筒 Flashlight	禦寒衣物 Keeping Warm Clothing	爐子 Stove	炊具 Cooking Utensils	盥洗用具 Toiletries	睡袋 Sleeping Bags	帳篷 Tent
半日遊 Half Day Tour	步道口 Trail Entrance →山風瀑布 Shanfong Waterfall	1.7 km			●	●	●	●	●	▲	▲								
一日遊 One Day Trip	步道口 Trail Entrance →山風瀑布 Shanfong Waterfall →佳心 Jiasin	4.5 km			●	●	●	●	●	▲	▲	●	▲	▲					
二日遊 Two Days Trip	步道口 Trail Entrance →山風瀑布 Shanfong Waterfall →瓦拉米 Walami	13.6 km	●	●	●	●	●	●	●	●	●	●	●	●	●	●	●	●	▲

佳心後為生態保護區及山地經常管制區，須辦理入園許可及入山許可。  
The area after Jiasin is mountain restricted area and ecological protected area, please apply for mountain entry permit and park entry permit.



### 瓦拉米步道健行

- 瓦拉米步道大致沿八通關越嶺道而行。全長約14公里，一路平緩的沿拉庫拉庫溪畔行進，至瓦拉米標高約1000公尺。若欲走完全程，建議以一天半的時間行走。
- 本步道佳心後為生態保護區及山地經常管制區，須辦理入園許可及入山許可。
- 辦理入園許可：佳心之後為生態保護區，請先向玉山國家公園管理處申請入園許可。入園小組(049)2773121~6轉256~258。或網站(http://www.ysnp.gov.tw)入園申請。
- 辦理入山許可：佳心之後為山地經常管制區，請先向所在地分局申請，或上警政署網站申請。(http://www.npa.gov.tw)
- 申請住宿瓦拉米小屋者，請上本處網站(http://www.ysnp.gov.tw)入山入園申請窗口申請，或請電話聯繫本處入園小組(049)2773121~6轉256、257、258。

### Walami Hiking Trail

- The area after Jiasin is mountain protected area and ecological protected area, please apply for mountain entry permit and park entry permit.
- Application for park entry permit: please call the Yushan National Park Headquarters at (049)2773121~6 ext. 256~258 for a pass before entering ecological protected area through Jiasin, or apply on Yushan National Park Headquarters website.
- Application for mountain entry permit: please apply mountain entry permit on National Police Agency website. (http://www.npa.gov.tw)
- Apply to lodge at Walami Cabin : please download cabin lodging application on Yushan National Park Headquarters website or call (049)2773121~6 ext. 256~258.

### 南安遊客中心服務項目

- 開放時間：09:00 ~ 16:30
- 休館日：每月第二個星期二，遇例假日順延一天。
- 視聽室：(1)影片播放時間：09:30、10:30、13:00、14:00、15:30。(2)團體預約：無法配合以上放映場次之20人以上團體，請於3天前以電話預約加映場次。
- 服務及預約電話：(03)888-7560、888-0742
- 遊客中心之展示室開放自由參觀，如有20人以上團體，可7天前以電話或網路申請解說員導覽。
- 南安地區尚無住宿服務及露營設施，鄰近8公里花蓮縣玉里鎮可提供較完善的食宿服務。

### Services provided by Nanan Visitor Center

- Opening Hours: 09:00 to 16:30
- Closed on: 2nd Tuesday of every month, if it falls on a holiday, the office would also be closed on the day after.
- Audiovisual Room: (1)Broadcasting Times: 09:30, 10:30, 13:00, 14:00, 15:30. (2)Group Reservation: For groups of 20 or more that could not meet the broadcasting time, please make reservations for additional broadcast at least 3 days in advance by phone.
- For services and reservations, Tel: (03) 8887560 & 8880742
- The showroom are opened for unrestricted visits by spectators, for a group of 20 or more persons, application for the guide of an interpreter could be done 7days ahead via telephone or internet.
- There are no accommodation and camping facilities in Nan-an Area. Proper services on overnight stay and dining services are available in Yuli Township.

### 玉管處相關聯絡電話 Contact Phone

玉山國家公園管理處 Yushan National Park Headquarters (049)2773121~6  
玉山國家公園管理處南安遊客中心 Nanan Visitor Center (03)8887560  
內政部警政署保安警察第七總隊第六大隊玉山分隊 Yushan Branch, The Sixth Division, The Seventh Special Corps, National Police Agency, Ministry of the Interior (049)2775119、2775110  
內政部警政署保安警察第七總隊第六大隊玉山分隊南安小隊 Nanan Squad (03) 88809000

### 玉山國家公園聯外交通示意圖 Travel Map for Yushan National Park





## 八通關越嶺道

日治時期，日人為管理居住於山區之布農族人，汲取山林自然資源及聯絡台灣東西部交通而闢建。

大正4年（西元1915年）由於日人強制收繳布農族賴以為生的狩獵槍枝，引發一連串布農族人襲擊警察駐在所事件，日人為了全面消弭布農族所形成的反抗勢力，故決定動工興築「八通關越道路」。大正8年（西元1919年）6月10日，越嶺道分別從東西兩端開始動工。西段由南投廳自楠仔腳萬（今信義鄉久美）開路，大正10年（西元1921年）3月築至大水窟完成42.43公里路程。東段由花蓮廳自玉里動工，於大正10年（西元1921年）1月22日完成至大水窟間83.78公里之路程，全程費時1年7個月。

### Japanese Occupation Era Batongguan Traversing Road System

This route was built and used during the Japanese colonization to facilitate the aboriginal tribe administrative strategy in addition to providing a passage for transportation between eastern and western Taiwan.

## 奔馳山林

布農族人相傳發源於中央山脈，後由於尋求獵場、山田移墾以及經歷異族征戰，聚落本身不斷分裂，而朝向東與南遷徙，活動範圍涵蓋現今南投、高雄、花蓮以及台東等縣。

瓦拉米地區全區曾經是布農族生活的領域，故多舊社遺址和感人的抗日事蹟。

### Bunun

The entire park had once been the region where the Bunun aboriginal tribe lived, thus many traces of the old community can still be seen today, including heart-touching events of the rebellion against the Japanese government.



「八通關越道路開鑿紀念」石碑  
Batongguan Road Completion Monument  
正面碑文為：「八通關越道路開鑿紀念」  
背面碑文記載施工起始及完成日、施工人數等工程概要。



隱身在山林中的布農族舊家屋

布農族舊家屋的炊食起火處

## 野生動物的天堂~瓦拉米

瓦拉米地區有「野生動物天堂」之稱，蘊藏著豐富的自然生態資源。全長約14公里，一路平緩的沿拉庫拉庫溪畔行進，至瓦拉米標高約1000公尺。

沿途風光明媚、鳥聲啾啾、蝶影相隨，布農舊址、人字形牆面及駁坎亦隨處可見。健行期間不但可體會先人的智慧，更可充分享受山區鳥語花香的美妙與欣賞瀑布溪谷之美，感受人與大自然融合的美好經驗。

### Walami area

The Walami area, known for its rich natural resources, has been dubbed as “the heaven for wild life”. The majority of the trail was made along the Batongguan Road built by the Japanese, spanning across 14km. The trail rises gently along the Lakulaku River with a total elevation of 1000m.



台灣黑熊 Formosan Black Bear

## 「八通關越道路開鑿紀念」石碑

西元1921年設立於玉里神社左前方（今玉里鎮西邊街玉泉市寺附近），載明日人開闢八通關越嶺道的工程概要；後因年代久遠，土地幾經更迭，隱沒於田野間逐漸被人遺忘，西元1987年經當地文史工作者尋獲，交由玉山國家公園管理處矗立於南安遊客中心前廣場展示。八通關越嶺道的警備道功能雖已式微，但其歷史意義歷久彌新。

### Batongguan Road Completion Monument

In 1921, this commemorative plaque was placed on the left side of the Yuli Shrine (near today's Yucuyan Temple on Sibian Street). Due to later road construction, this plaque became obscured under a stone bridge in the Keching neighborhood. Fortunately, it was discovered and move to Nanan.



## 布農族傳說 Traditional story

### 貓頭鷹～布農族的送子鳥

布農族傳說，如果有貓頭鷹在住家附近鳴叫，住家將會有新生命的到來。

#### Owl — Child-giving Bird of Bunun Tribe

Traditional Bunun all knows, if there is an owl blaring to call in the neighborhood of residence, the residence will have the arrival of a new life.



### 百步蛇～布農族的好朋友

傳統的布農族人遇見百步蛇會將自己身上的紅布割下一塊送給百步蛇，並說：「ka-viaz(朋友)送給你！請走開我要過路。」

#### Hundred-pace Snake — Good friend of Bunun Tribe

When the traditional Bunun person who meets the hundred-pace snake, he or she will cut a piece of red cloth from one's cloth and send to the snake. Then said to the snake: " The ka-viaz(friend) sends to you! Please go away, and let me pass."

## 瓦拉米步道景觀介紹 Points of Interest



### 山風瀑布 (距步道口1.7k) Shanfong waterfall

源自大里仙山，水流經山風二號吊橋一瀉而下，夏日裡，行經吊橋，涼意迎面拂來，暑氣全消。

From its source, Dalisian Mountain, the water flows through the Shanfong Suspension Bridge II. In summer, the rapids roaring down gives tourists an exceptionally cooling effect, taking away the summer heat altogether.



### 佳心 (距步道口4.5k) Jiasin

為本段步道展望最佳處，向東望拉庫拉庫溪谷，景致盡收眼底。

This is the best location on this stretch of trail that provides a panoramic view on Lakulaku River in the east.



### 喀西帕南紀念碑 (距步道口8.7k) Kesipanan Commemorative Monument

布農族曾在此發動抗日事件，目前留有一日警殉職者之紀念碑。

This site was where the Bunun tribe launched their rebellion against the Japanese Government. Today, a commemorative monument stands proudly in memory of policemen who died in line of duty.



### 瓦拉米 (距步道口13.6k) Walami

日治時期曾設有日警駐在所、招待所、教育所、醫療所等，目前設有太陽能山屋一座。

During the Japanese colonization, a police administration, a reception, a school and a clinic were built. Today, a solar-powered cabin is built here.

## 登山健行注意事項 Better to be safe than sorry!

### 遇到黑熊

- (一)若在野外看到黑熊，而熊尚未發現你，宜保持適當距離，安靜的儘速離開，以免驚擾到熊。
- (二)在行進時，若處於空曠處，可仔細留意四周，在視野不佳及稜線轉折處，可出聲響，避免與熊不期而遇。
- (三)於黑熊出沒頻繁區域，建議結伴同行，登山健行時請跟緊團隊，保持可前後呼應的狀況。
- (四)不要將食物及垃圾留在山屋或營地，以避免黑熊前往覓食，造成黑熊無意間破壞山屋或園區內的設施，也減低與黑熊相遇的機會。更避免餵食。

### Encounter with A Bear

- (1) If you should encounter a bear in the wilderness and have not been spotted yet, it is advisable that you keep an appropriate distance. Leave the vicinity quietly as soon as possible to avoid disturbing the bear.
- (2) When moving in an wide exposed area, be very vigilant of your surroundings. If you're in an area with limited view or with many turns, you can either cough loudly or shout to avoid a chance encounter.
- (3) When in an area with frequent bear activity, hikers should be cautious and stay together as a group.
- (4) Do not leave food or trash within cabins or campsites; this might lure bears in search of food. This can reduce the chance of encountering a hungry bear and any possible damages it might cause. Do not feed the bears.



台灣黑熊

### 毒蛇

- (一)蛇多不會主動攻擊，不可以故意招惹挑釁。
- (二)登山健行時應著長袖、長褲、長筒鞋、手套。
- (三)避免清晨或夜間在草叢、石堆處活動。

### Snake

- (1) Snakes usually will not attack unless they are provoked, please don't disturb them intentionally.
- (2) Mountaineers should dress in long sleeves, long pants, long boots and gloves.
- (3) Avoid activities during dawn or night in bushes and masses or rocks.

### 蝮蟻

- (一)登山健行時應著長袖、長褲、長筒鞋、手套。
- (二)可帶塗抹防蟲藥品趨避。

### leech

Mountaineers should dress in long sleeves, long pants, long boots and gloves.



百步蛇



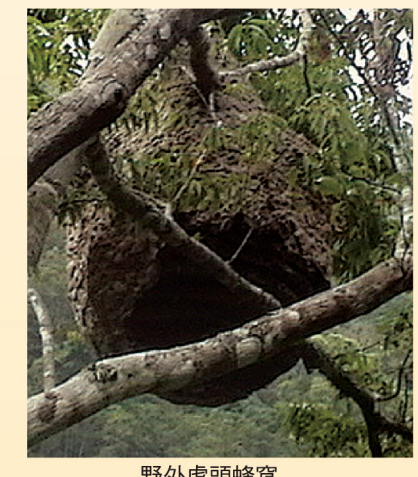
蝮蟻

### 野蜂

- (一)登山健行時避穿花色或鮮艷衣物，宜著白色、綠色衣帽，並注意樹上、草叢、土堆。
- (二)避免使用香水、髮膠等含香料物品。
- (三)儘量穿著長袖、長褲並戴手套。
- (四)遇到蜂群，應保持冷靜，慢慢移動，避免拍打或快速移動，如無法逃離，可就地趴下並用手抱住頭部。

### Hornet, Bee

- (1) Avoid walking in the mountain forest in floral or bright-colored outfit. Wear outfit that are white and green in color. Beware atop of trees, bushes and mounds.
- (2) Avoid applying fragrance-containing materials such as perfume and hair gel.
- (3) Mountaineers should dress in long sleeves, long pants and gloves.
- (4) Remain calm when you encounter with a bee swam. Move slowly and avoid slapping or quick movement. If there is no way to escape, prostrate on the stop and cover your head with your hands.



野外虎頭蜂窩

### 咬人貓

行走山區請注意，勿碰觸，以免造成皮膚傷害。

### Stinging Nettle

Do not touch.



咬人貓

### 登山活動須知

- (一)登山健行請備妥足夠登山裝備及糧食，並依規事先辦理入山入園申請。
- (二)登山嚴禁脫隊獨行及擅離步道、抄捷徑。
- (三)請謹守「除了足跡，什麼都不留；除了照片，什麼都不取。」之野外活動原則，共同維護大自然環境，為後代子孫留下一片淨土。

### The must-know for mountain activities

- (1) For mountain hiking, please equip yourself with sufficient mountain hiking equipment. According to the regulations, please apply for permits to enter the mountain and park beforehand.
- (2) Leaving the team and move about independently, leaving the trail without the knowledge of other members and taking shortcuts are strictly prohibited during mountain hiking.
- (3) In order to protect natural enviroment and leave behind a pure land for later generations, please abide stringently by the principle of outdoor activities, "Leave nothing but footprints; take nothing but photographs."